



CAMBODIA
PROPERTY
AWARDS

WINNER

BEST CONDO DEVELOPMENT
(GREATER PHNOM PENH)

CAMBODIA
PROPERTY
AWARDS

**HIGHLY
COMMENDED**

BEST RESIDENTIAL
ARCHITECTURAL DESIGN
(LOW RISE)



CITYINDEX PHNOM PENH

Bodaiju

Residences

The 1st Japanese Residential
Development in Cambodia



Architects: Asma Architects



Ivan Tizianel

A French-Cambodia collaboration, Asma Architects was established in Paris and made its first appearance in Cambodia with the completion of the Kantha Bopha Hospital's conference center in Siem Reap in 2001. With its founding partners Yalin Bun, Ivan Tizianel, Lisa Ros, and Cyril Ros at its helm, the firm has grown and completed a great number of projects in Cambodia. Some of their notable projects include the VIP terminals for both Phnom Penh and Siem Reap airports, Viroth Hotel 1 and 2, Rambutan Hotel, and numerous villa to name a few.

Asma Architects designs with attention to detail and context, striving to create architecture that harness and respond to climates. Diffusing light, balancing heat and providing shade serve as inspirations for the firm to create architecture that is both inviting and relevant to local context.



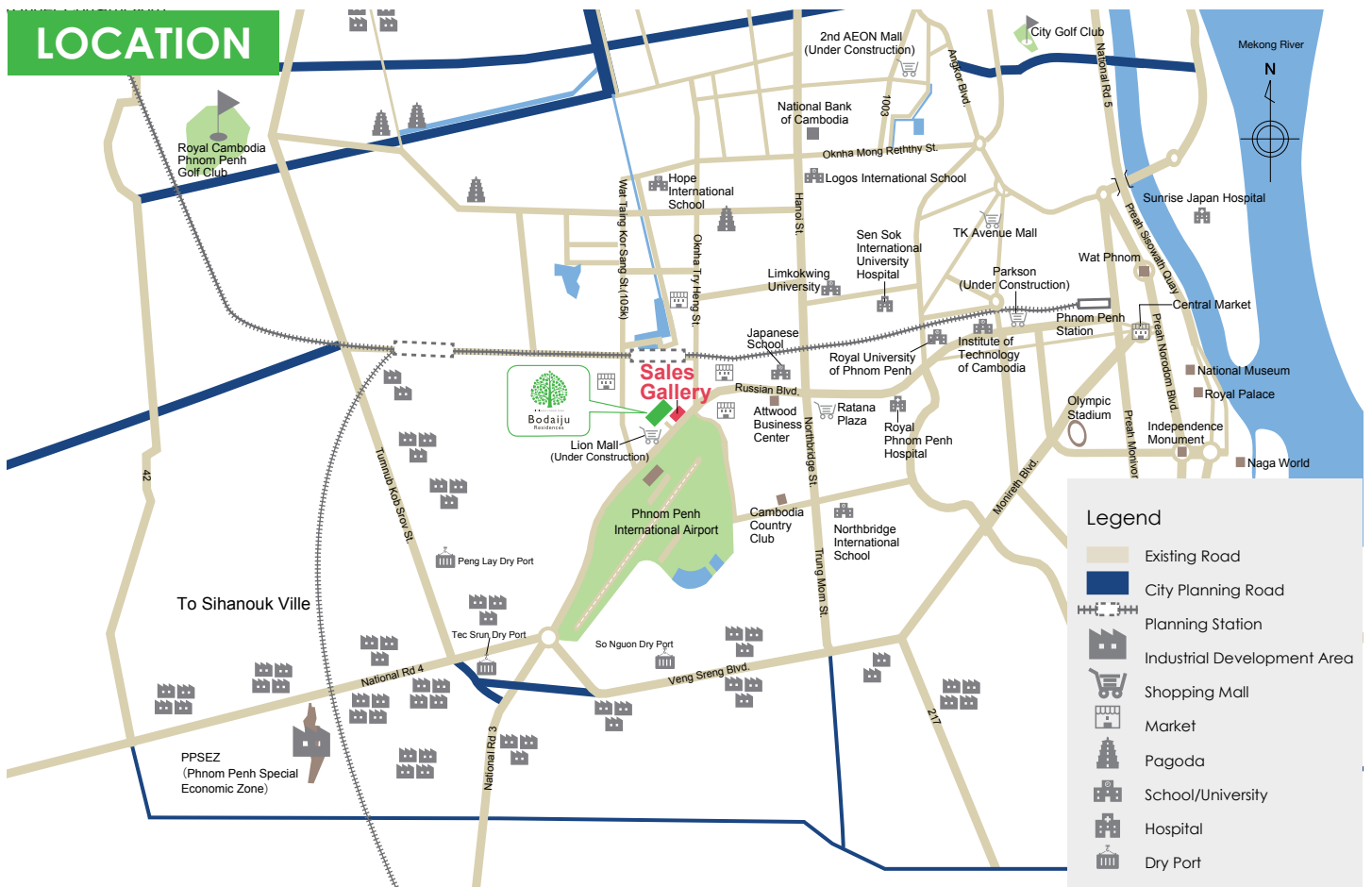
ATTRACTIVENESS OF BODAIJU RESIDENCES

- Location** Proximity to key landmarks - International Airport, Lion Mall & Phnom Penh Special Economic Zone
- Expansion** Rapid development from city centre towards west of Phnom Penh
- Reliable** Established & trustworthy Japanese developer with abundant experience
- Affordability** Fully furnished units with property management service
- Investment** Potentially high rental returns & capital appreciation



WHY INVEST IN CAMBODIA?

- Average 7% GDP growth per annum for the past 10 years.
- USD Denomination - limiting exchange rate risk.
- Expected influx of Foreign Direct Investment with establishment of AEC.
- Housing demand increases with growing population.





FACILITIES



BBQ Pit with alfresco dining

A perfect setting to entertain and socialise

Garden Pavilion

Elegantly crafted landscaping with foliage and greenery

Japanese Garden

A serene corner recreation and reflection that captures the beauty of nature

Forest Cafe

Enjoy your favourite coffee in the open under a canopy of trees



Mini Mart

Groceries and other conveniences readily available at your doorstep

Infinity Sky Pool

Indulge in unobstructed panoramic views and relax in our infinity pools

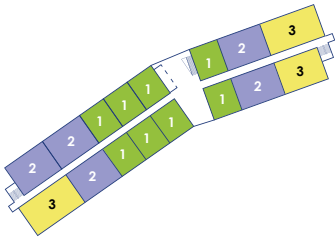
Sky Fitness

A secluded corner designed to achieve a tranquil mind and body

Kids Centre

Convenience for families with young children with the option of responsible and quality care services

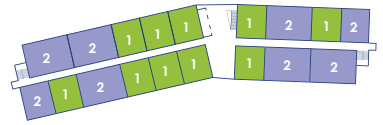
BLOCK A



BLOCK B



BLOCK C



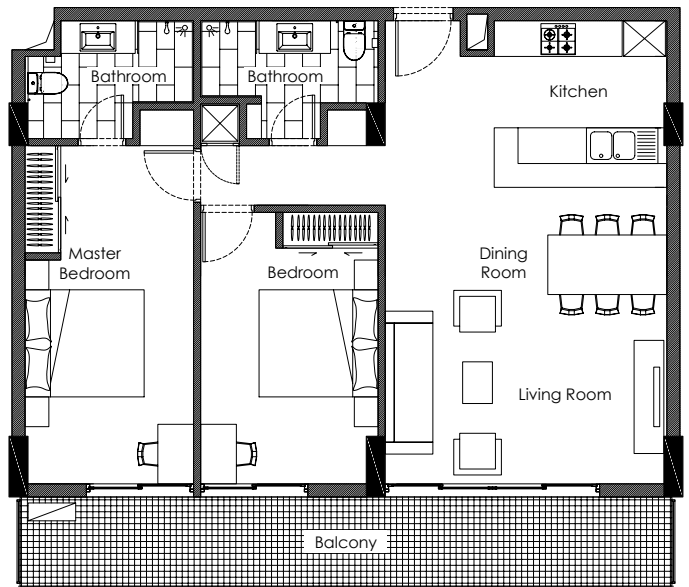
1 Bedroom

Net Area:
56.2 - 69.7m²



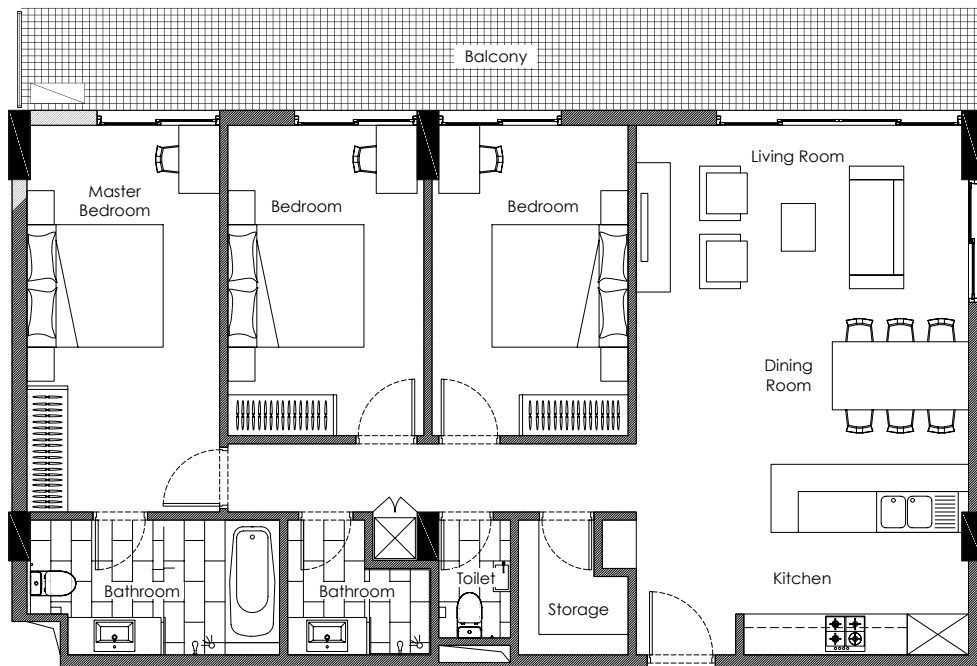
2 Bedroom

Net Area:
88.0 - 116.9m²



3 Bedroom

Net Area:
132.7 - 154.4m²





FIXTURES, FURNITURE & HOME APPLIANCES

In Bodaiju, our apartment's interior is of world-class quality as well. The units are fully furnished and ready for immediate rental!

To create your ideal living space, we provide comprehensive furnishings and use only the best quality products for every unit.

ELECTRICAL APPLIANCES

The appliances are all Japanese-branded, providing the utmost assurance on their quality. Appliances include air-conditioners, television, refrigerator, microwave oven, washing machine, rice cooker and kettle.

FURNITURE

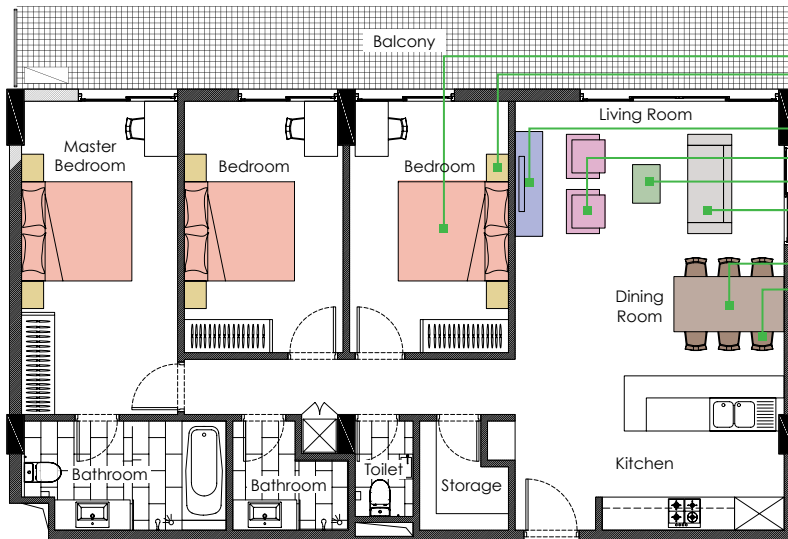
Our package provides a wide array of furniture; queen-sized beds, tables (bedside, coffee and dining), chairs (dining and relax), TV Console and a 2-seater sofa. Almost everything has been covered for you!

Fittings

From lighting, flooring to doors, we got it all settled as well! The kitchen is entirely furnished with an island top, cabinets, basin, gas stove, and ventilation hood, complete with ceramic wall tiles. In addition, the bathrooms are too equipped with cabinets, a basin and TOTO sanitary products finished with ceramic wall tiles and floor.

FURNITURE PACKAGE*

For
1,2,3
Bedroom



- Queen Bed
- Bedside Table
- TV Counter
- Relax Chair
- Coffee Table
- 2 Seater Sofa
- Dining Table
- Dining Chair



Queen Bed



Coffee Table



2 Seater Sofa



Dining Table



Bedside Table



Relax Chair



TV Counter



Dining Chair

APPLIANCES

Japanese Brand Appliances



Air Conditioner
PANASONIC



Refrigerator
HITACHI



Microwave Oven
PANASONIC



Rice Cooker
PANASONIC



Television
SONY



Washing Machine
PANASONIC



Kettle
PANASONIC

* Terms and conditions apply



Established in 1996, Creed Group is a Japanese real estate investment firm with abundant experience in the mature real estate market in Japan. In recent years, the Group has been directing our business focus to Southeast Asia's and Bangladesh's growing real estate market, with a strategic direction of partnering with the best local players of the region as well as bringing in our own expertise from Japan. Since our establishment, Creed Group has completed over 400 projects globally.



Dhaka, Bangladesh



Ho Chi Minh City , Vietnam



Ho Chi Minh City , Vietnam



Johor Bahru, Malaysia



Phnom Penh, Cambodia



Phnom Penh, Cambodia

SALES GALLERY

OPEN DAILY

9:00am to 6:00pm

For any enquiries, please contact us:
#269, Russian Boulevard
Sangkat Kakab, Khan Porsenchey
Phnom Penh

Tel: 023 900 866 (For English / Khmer)
077 555 912 (For Chinese)

www.bodaiju-residences.com
CreedCambodia

Website:



Google360:

