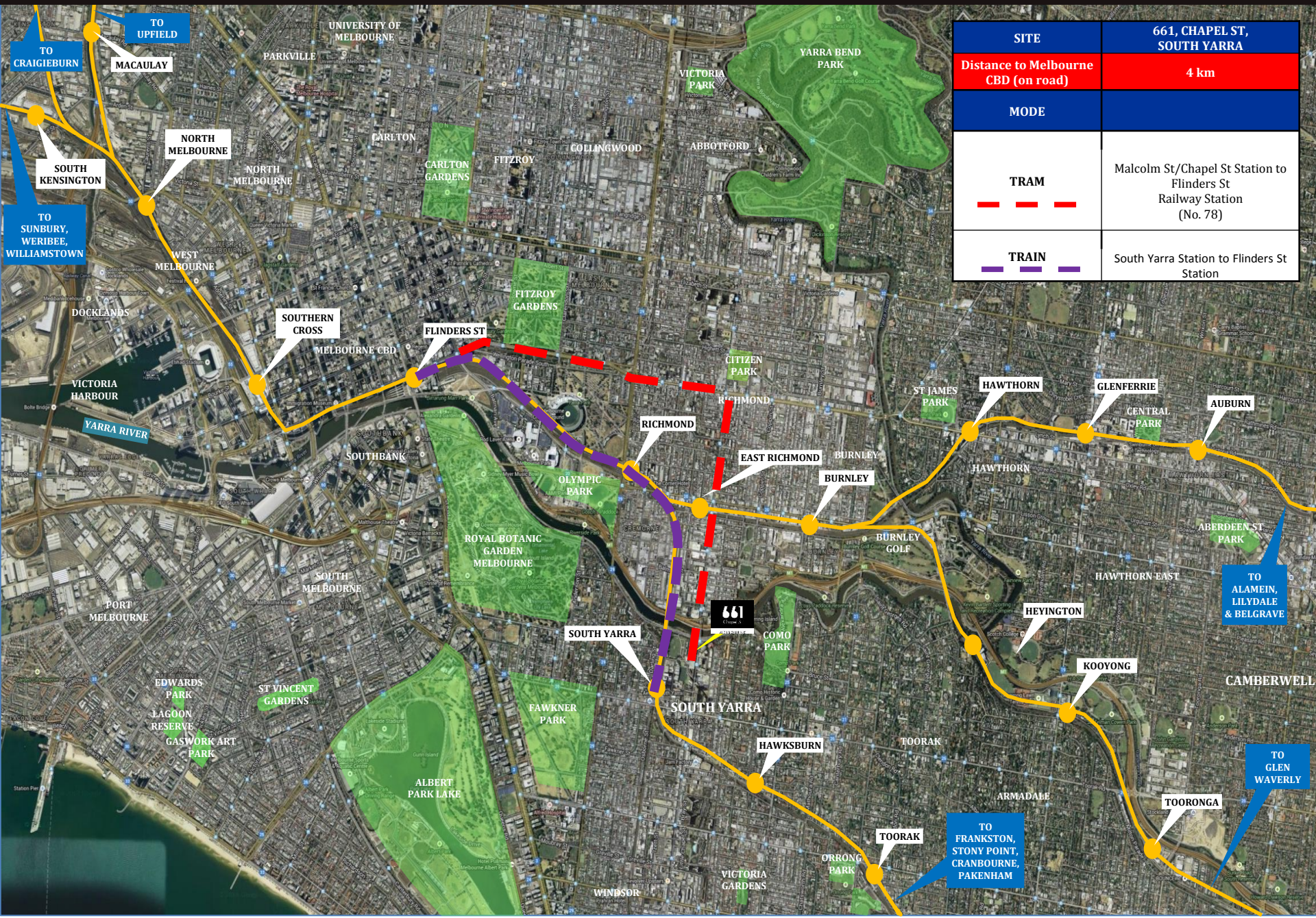


TRANSPORTATION NETWORK



| | |
|--|--|
| SITE | 661, CHAPEL ST, SOUTH YARRA |
| Distance to Melbourne CBD (on road) | 4 km |
| MODE | |
| TRAM - - - | Malcolm St/Chapel St Station to Flinders St Railway Station (No. 78) |
| TRAIN — — — | South Yarra Station to Flinders St Station |

TO ALAMEIN, LILYDALE & BELGRAVE

TO GLEN WAVERLY

TO FRANKSTON, STONY POINT, CRANBOURNE, PAKENHAM

DISTANCE TO NEAREST STOPS



MELBOURNE
HIGH SCHOOL

YARRA RIVER

661
Chapel St
MELBOURNE

MALCOLM ST/CHAPEL ST
TRAM STATION
(doorstep)

SOUTH YARRA
TRAIN STATION

PEDESTRIAN WALKING
DISTANCE
(0.65 km to South Yarra Train Station)

FORREST HILL
CHAPEL STREET

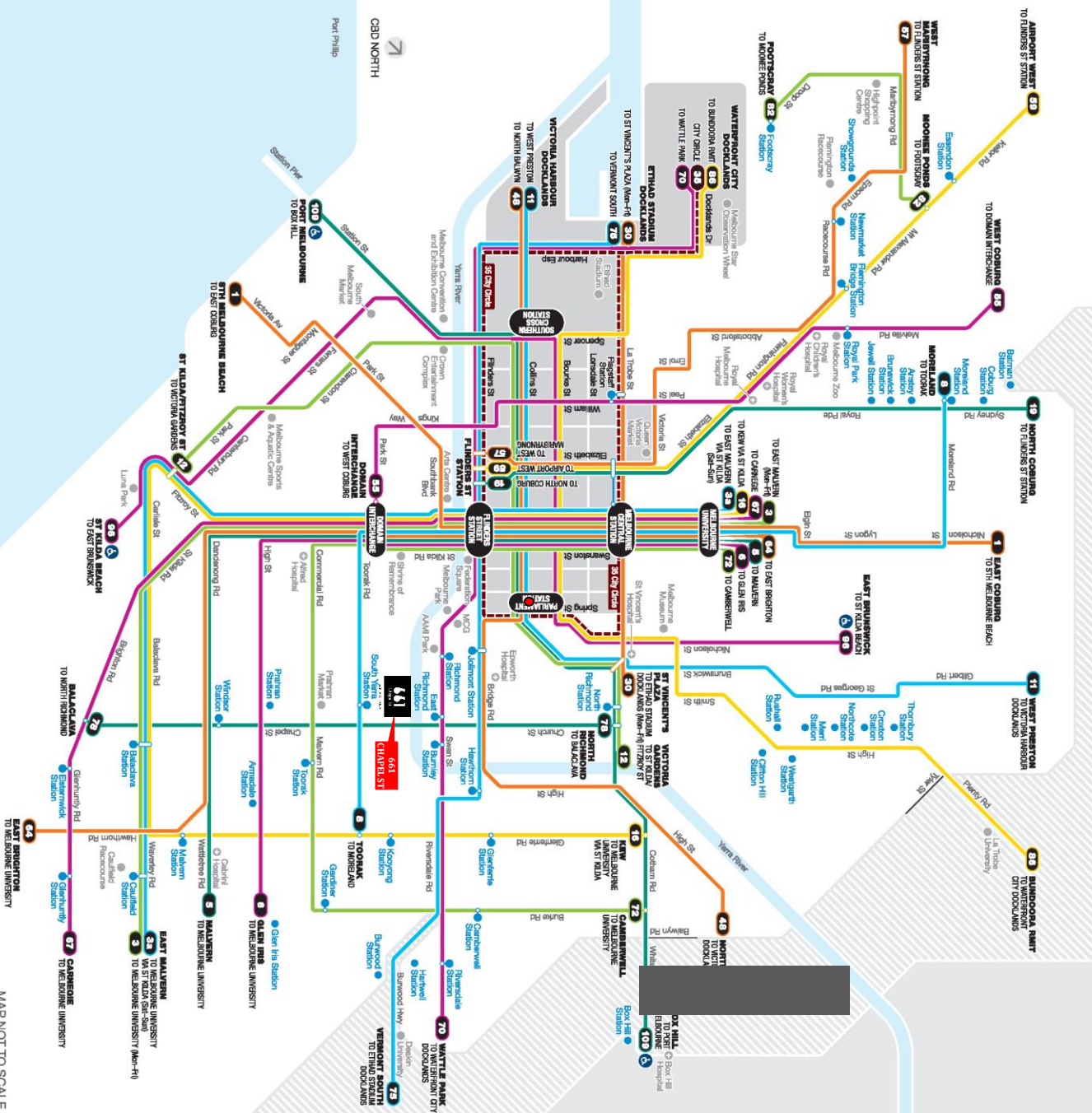
CHURCH STREET

TOORAK ROAD

Zone 1

Zone 1 or 2

Zone 2



MAP NOT TO SCALE
Effective July 2014



Information

- Ticketing zones
- Zone 1
 - Zone 1 or 2
 - Zone 2
 - CBD & Docklands
- Tram terminus
- Low-floor tram priority route
- Direct tram connection
- Direct train connection
- Train station within short walk or stop
- Places of interests
- Hospital

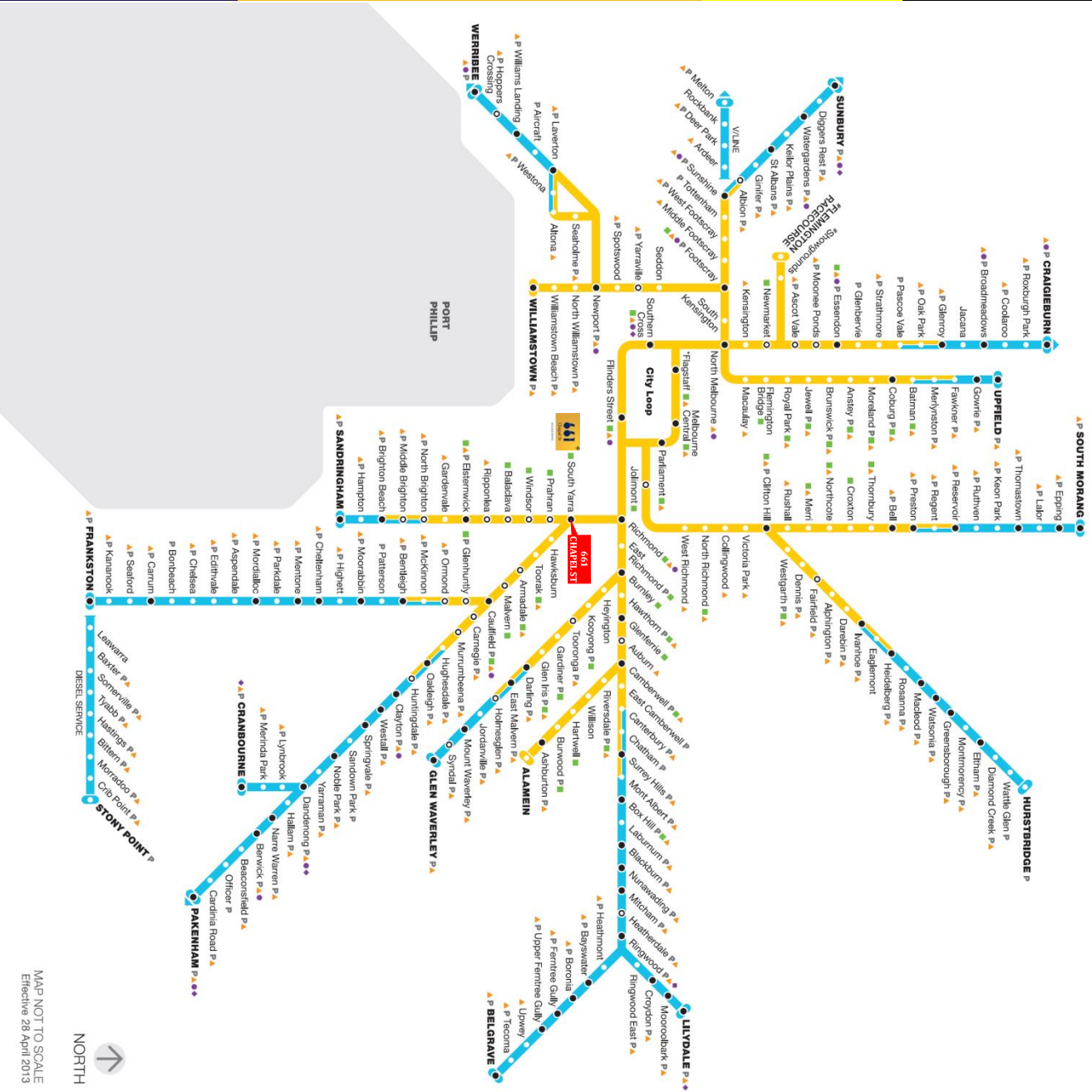
All trams operate in Zone 1. If travelling only in the Zone 1 or 2 overlap, a Zone 2 ticket can be used

For more information visit ptv.vic.gov.au or call 1800 800 007 (9am – midnight)

© Public Transport Victoria 2014
Effective July 27, 2014



Melbourne train network



MAP NOT TO SCALE
Effective 28 April 2015



Information



- Zone 1
- Zone 2
- Connecting train
- Connecting bus
- Connecting V/Line train
- Connecting V/Line coach
- Premium Station
- Host Station
- Parking

For more information visit ptv.vic.gov.au
or call 1800 800 007 (9am – midnight daily)

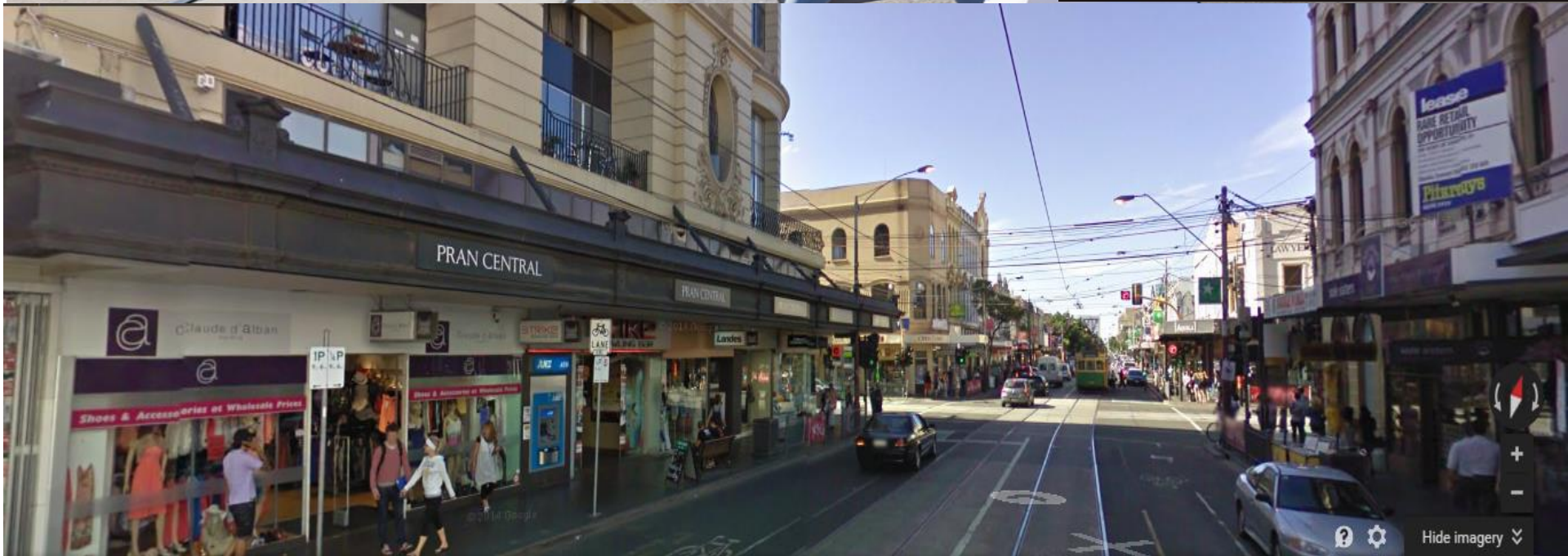
Premium Station:
Customer service centre is staffed from first train to last, seven days a week.

Host Station:
Customer service staff at station during morning peak.

*Fastest Station is closed on weekends and public holidays
*Line to Showgrounds and Flemington Racecourse is only open for special events.
© Public Transport Victoria 2015



CHAPEL STREET





PRIVATE PORTE COCHERE





Panoramic View



Panoramic View

GROUND FLOOR - THE GRAND LIBRARY



SIXTH FLOOR - THE LOUNGE



1 BED - KITCHEN



2 BED - LIVING



2 BED - ENSUITE

