



**661**

Chapel St

MELBOURNE

RESIDENCES  
INSPIRED BY  
A STORY

p16 A WALK TO BE  
REMEMBERED

SWIM TOWARDS  
THE SKY p39

BONJOUR  
p28 LALIQUE

# CONTENTS

05

## CURATION OF A MASTERPIECE

— ARCHITECTURAL CONCEPT —

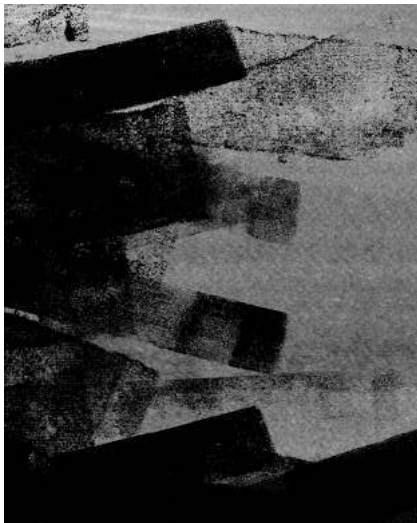
The Story Begins

**The Vertical Village**

The Artisans of Vertical Innovation

**Tribute to Subdued Elegance**

You Don't Just Enter, You Arrive



23

## DETAILED TO ITS FINEST

— HIGH-END SPECIFICATIONS —

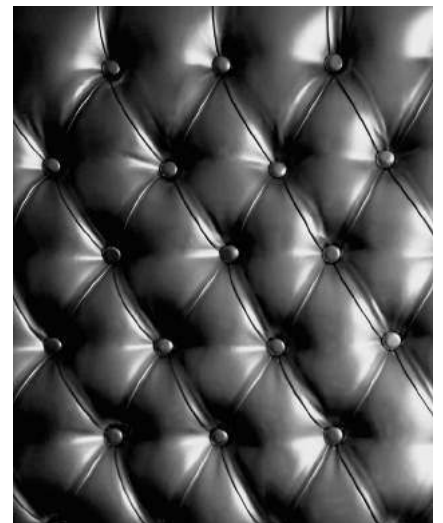
The Blue Brick Road

**A Cut Above**

Bonjour Lalique

**The Art of Collaboration**

Art Made Furniture



15

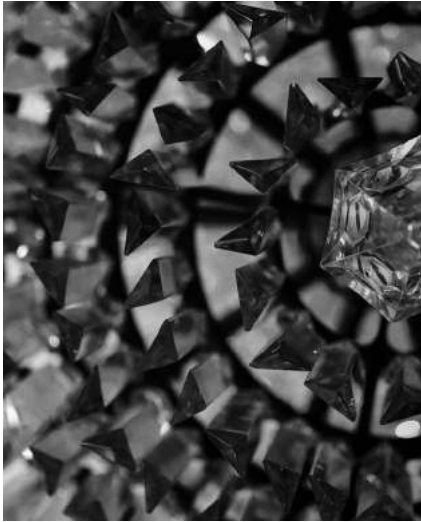
## INFUSING ART AND LITERATURE

— DESIGN STATEMENT —

A Walk To Be Remembered

**Be Guided By The Light**

Grandeur at The Grand Library



# 33

**LUXURIOUS  
LIFESTYLE**

— FACILITIES —

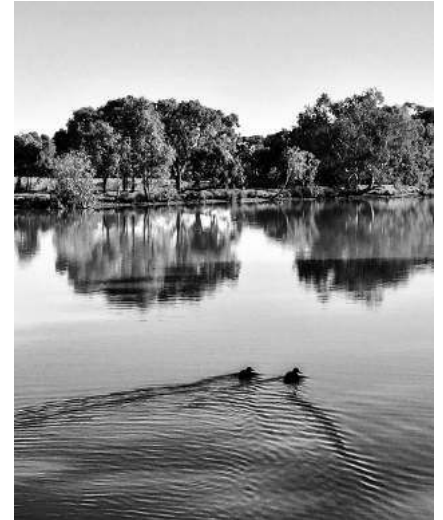
A Bounty of Bliss  
**Swim Towards The Sky**  
Age Gracefully

# 43

**HOME  
IS WHERE THE HEART IS**

— LIVEABILITY —

A View That Inspires  
**A Perfectly Tailored Fit**



# 53

**FROM CHAPEL  
WITH LOVE**

— LOCATION —

The River That Shaped A City  
**Picturesque Prestige**  
A Walker's Dream  
**Meet Your Neighbours**  
A Little Place I Know  
**Local Loves on Chapel Street**

---

# 79

**GET TO KNOW US**



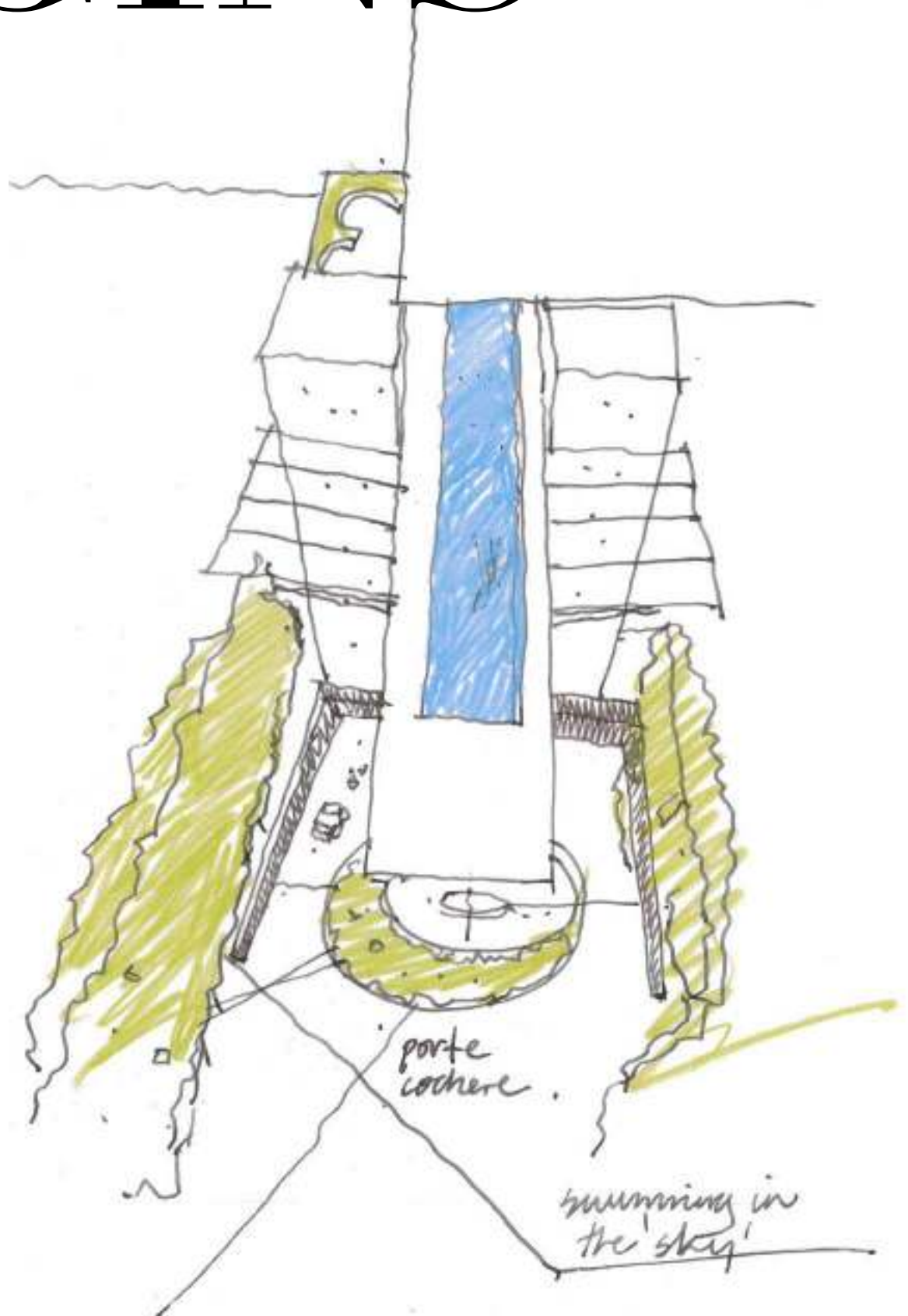


CURATION OF A  
**MASTERPIECE**

— ARCHITECTURAL CONCEPT —

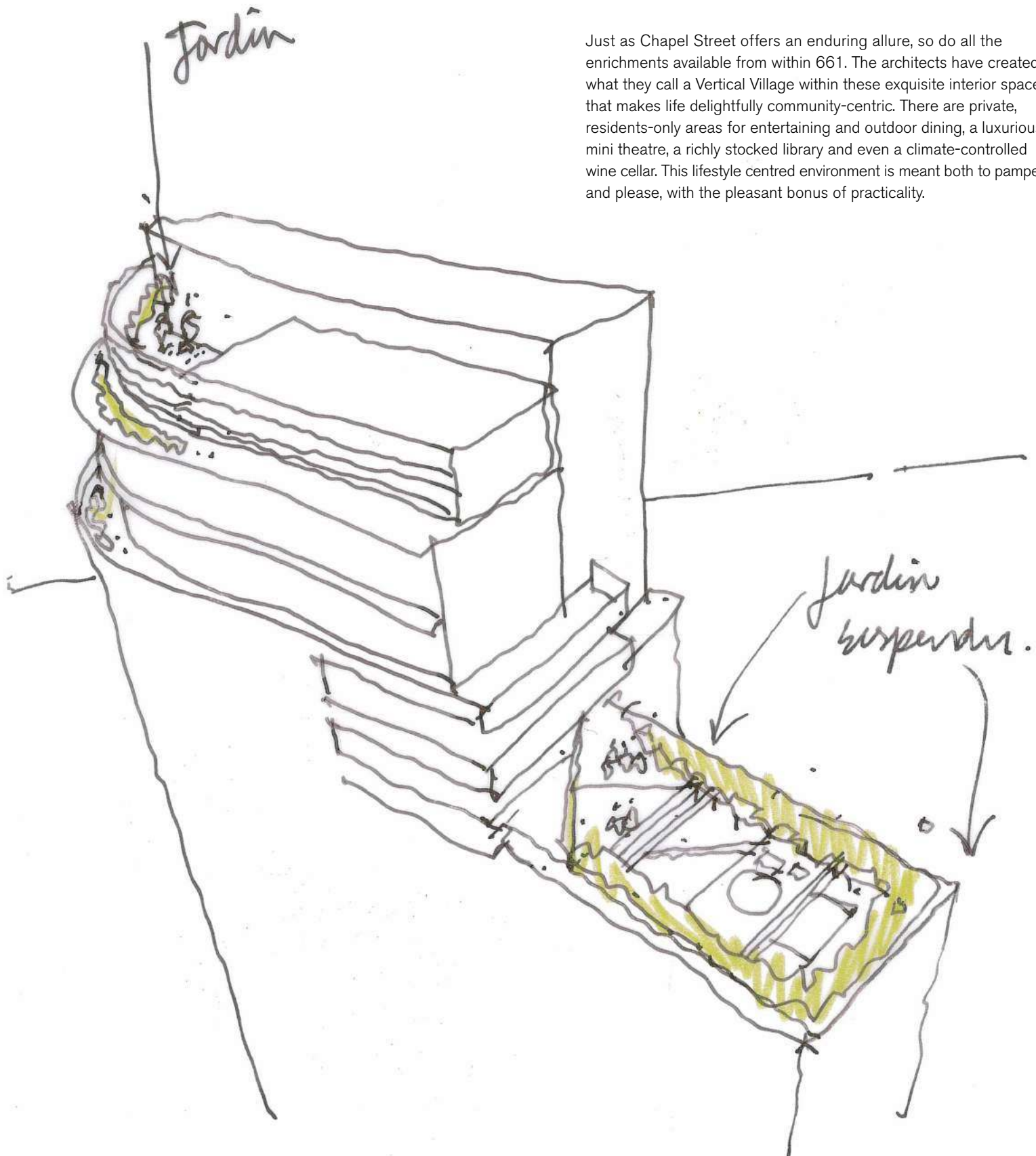
# THE STORY BEGINS

An introduction to 661 Chapel St needs to begin with its conceptual intentions. It has been created not just as a residence, but as a refined, authentic and impeccably designed home. With the architects' much-lauded reputation for clean lines and detail comes a devotion to making everything about 661 enriched, from the moment of entry and into every fabulous private and community space. From its quietly elegant exterior to its refreshingly artistic interiors, every impression expresses the message, "Welcome home."



# THE VERTICAL VILLAGE

Just as Chapel Street offers an enduring allure, so do all the enrichments available from within 661. The architects have created what they call a Vertical Village within these exquisite interior spaces that makes life delightfully community-centric. There are private, residents-only areas for entertaining and outdoor dining, a luxurious mini theatre, a richly stocked library and even a climate-controlled wine cellar. This lifestyle centred environment is meant both to pamper and please, with the pleasant bonus of practicality.



Neil de la Coeur and Vanessa Bird make up the dream husband-and-wife team of Bird de la Coeur Architects, an award-winning design-based practice. They work closely with their clients on each project to achieve a strong connection between the site and place.

The practice has received RAIA awards, state government awards and National UDIA awards for their work, which has also been widely published. These numerous awards have placed them amongst the most sought-after architects in the region.

# THE ARTISANS OF VERTICAL INNOVATION







## *Immaculate Detail*

661 is an impeccable living space. The designs have been crafted to fuse function and form in every piece, be it a frame for a wall or a piece of rock that lines our cobblestoned entrance. This is our guiding philosophy. Residents can experience these finer details and finishings throughout this vertical art form.

Our work is both original and precise; we are known for our attention to detail and our use of exquisite and original materials. Focus is on the flawless execution of our projects. We are committed to create and transform living spaces into an experience of the senses.

Bird de la Coeur  
Architects of 661 Chapel St

# TRIBUTE TO SUBDUED ELEGANCE



Complementing the exclusiveness of the neighbourhood is the admirable structure of 661 Chapel St. It is most appealing to a select few who have a sense of refinement and know-how to appreciate the intricacies of luxury. It's for those who possess the 'joy of life' to take advantage of the style of living only a few other homes in the world can offer.



*A residential jewel designed to shine*

# YOU DON'T JUST ENTER, YOU ARRIVE





For residents, the 5-storey *porte cochere* is a daily, “Welcome home.” For guests, an impressive introduction.

They say first impressions last forever. And they do. Once you set foot on our private entryway through our *porte cochere*, from blue cobblestones to high ceilings, it will be a sight to remember. The *porte cochere* is an expertly-paved and landscaped area that acts as a drop-off and presents a formal 5-storey undercover extension to the foyer. Step inside, and you immediately sense an ambience much like you’d experience in the world’s most exquisite 6-star hotel lobbies.

*\*This artist’s impression does not reflect buildings located adjacent to the property.*





# INFUSING

## ART AND LITERATURE

— DESIGN STATEMENT —



# A WALK TO BE REMEMBERED

**Take your first step onto the lobby and be greeted by an impressive 4-storey high glazed lantern.**

The main foyer is a 4-storey, glass-lantern lobby that features a grand crystal chandelier. This entire ensemble elicits a classic beauty rarely found in recently built homes.

Attention to interior lighting sets the pathway beautifully. An extraordinary lighting sculpture allows timeless enjoyment without interfering with the romance of the natural, crystal-clear starlit evenings.

This space leads to an art-filled sculptured walk. Hold your breath as you make your way down this aisle. Be mesmerised by the one-of-a-kind Lalique art pieces of intricately sculptured glass that imbues fine, artistic details.





*Uniquely stunning 4-storey glass-lantern lobby  
\*Sculptures shown may be substituted for other pieces of art.*

# BE GUIDED BY THE LIGHT

The extra design touches that are part of your everyday experiences at 661 Chapel St extend even to the light that greets you every step of the way. Your walk to the magnificent lobby, your home or the luxurious community spaces of 661 is chaperoned by natural and sculpted light forms. From the *porte cochere*, to the sculptured walk and through to your front door, it's just another bright way in to welcome you home.

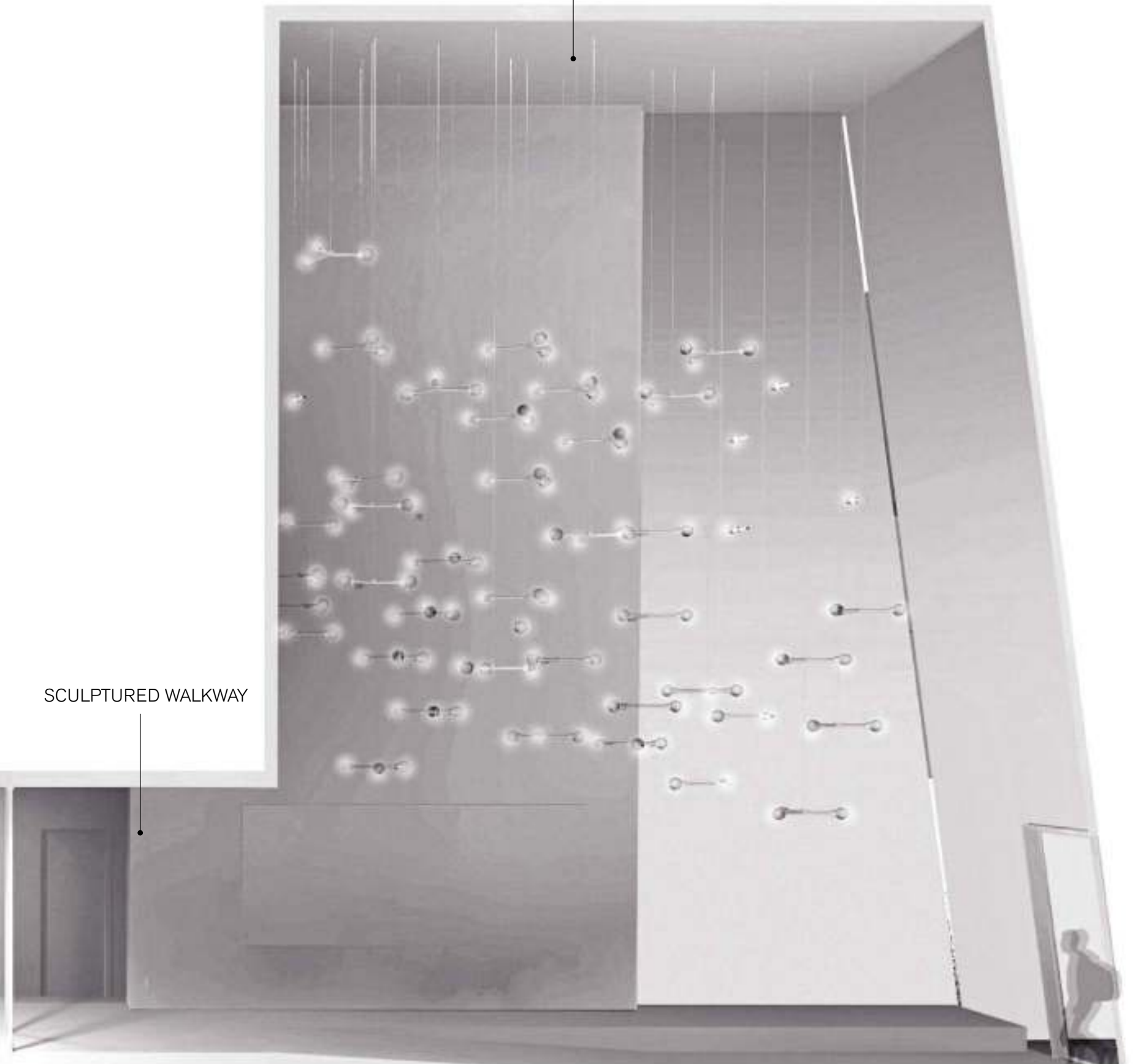
GRAND LIBRARY

CONCIERGE



GLASS-LANTERN LOBBY

SCULPTURED WALKWAY

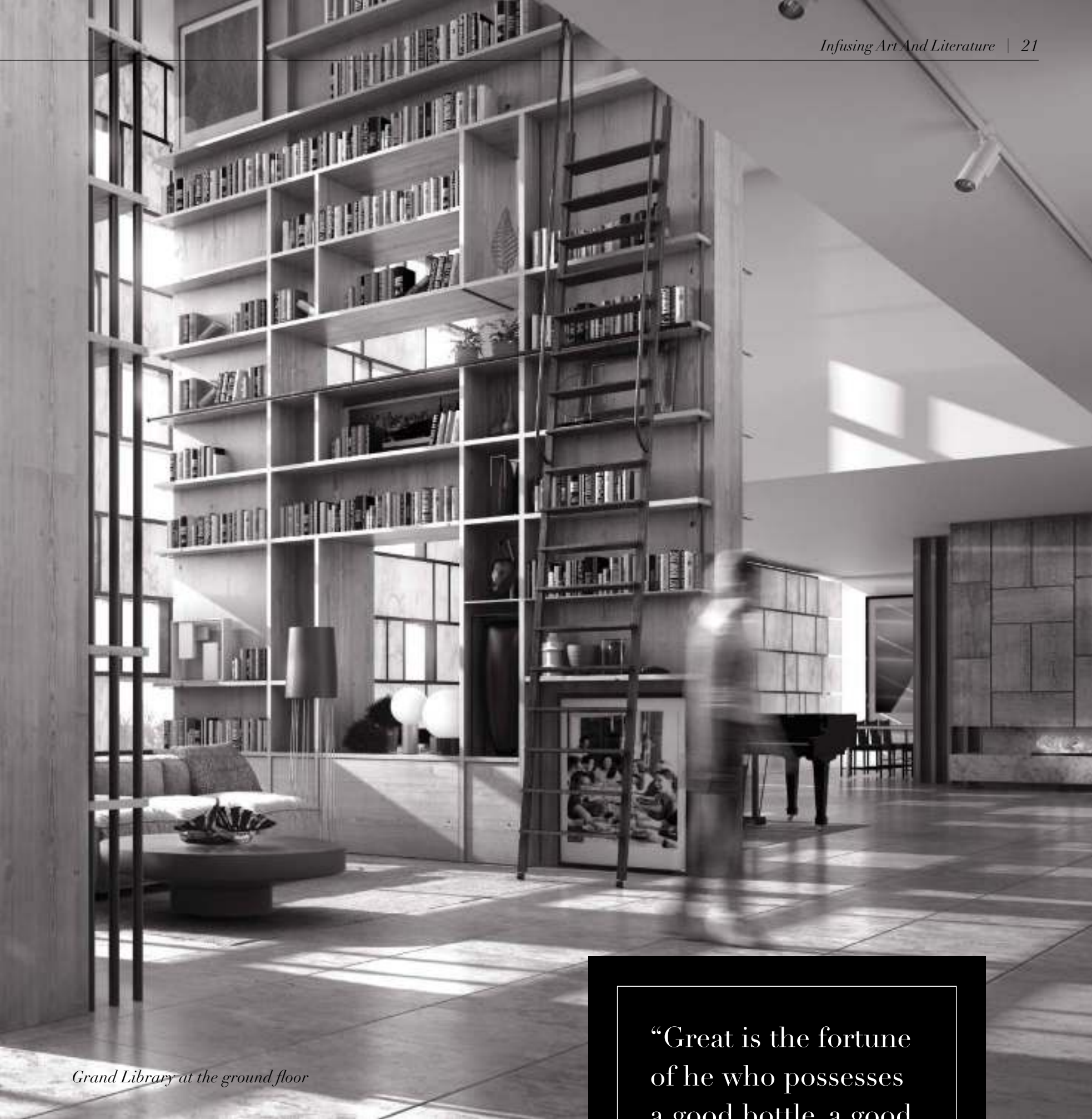




# GRANDEUR AT THE GRAND LIBRARY

The walk ends in a generous, double-storey light-filled library space that looks out towards Melbourne High School.

From volumes of antiquity to visions of the future, your reading pleasures are shelved with artisanal skill that reconciles tradition and modernism.

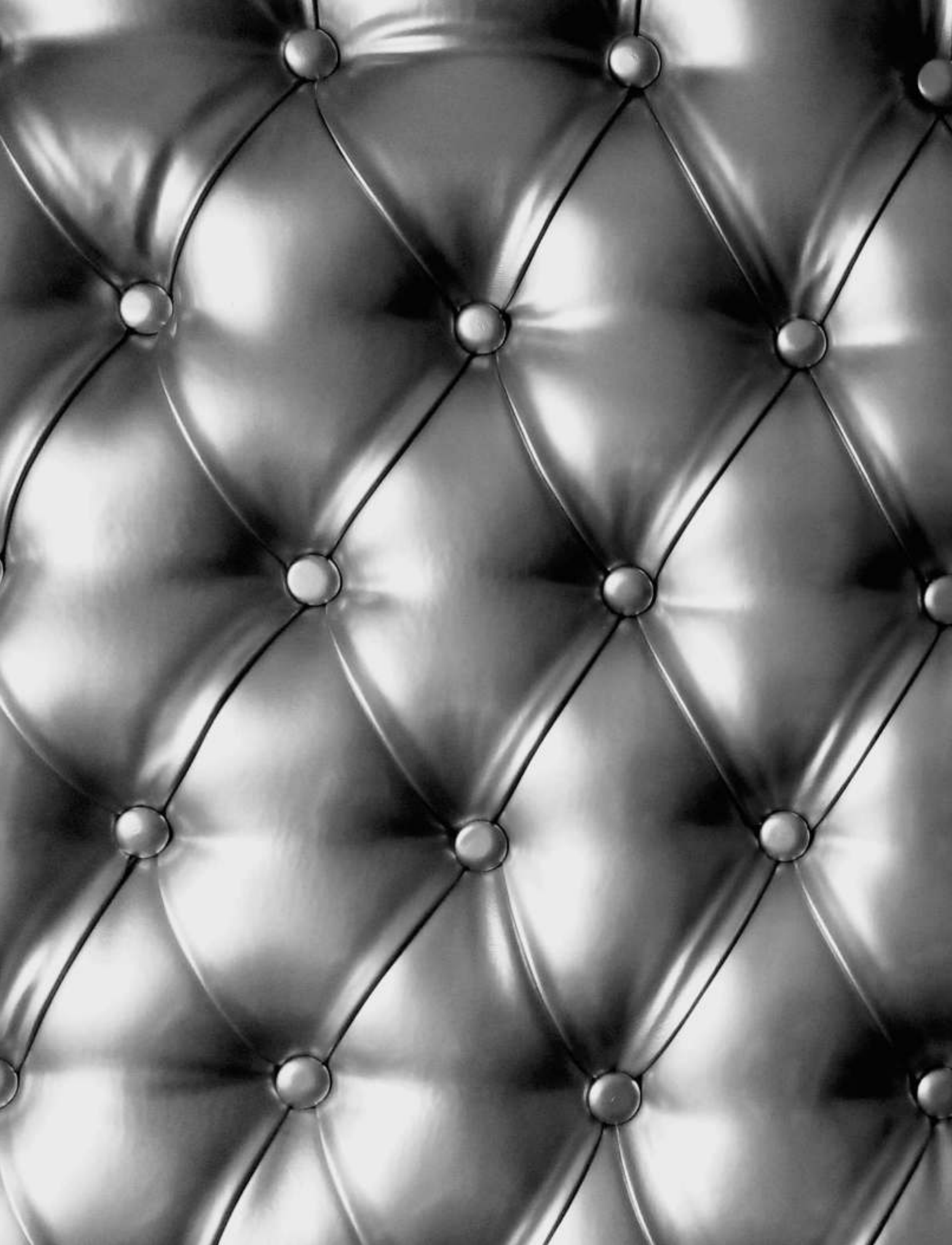


*Grand Library at the ground floor*

A vision of the Grand Library arose within the context of expanding love of the printed word. The design for the main reading room features tall, luxurious glass and onyx windows that emit warm, golden light throughout the day. Stacked galleries of books over vertical wooden structures offer seemingly endless open bookcases that are a browser's paradise.

“Great is the fortune  
of he who possesses  
a good bottle, a good  
book, a good friend.”

- Molière





**DETAILED**  
TO ITS FINEST

---

HIGH-END SPECIFICATIONS

---







# THE BLUE BRICK ROAD

“Come quickly,  
I am tasting  
the stars.”

- Dom Perignon

**The materials and finishes at 661 Chapel St have been fastidiously curated to luxurious perfection.**

For example, the distinctive blue cobblestone that paves our *porte cochere* was sourced after a painstaking, but exhilarating, search through scores and scores of cobblestones.

Each cobblestone was carefully selected, honed and laid with an end result that adds a certain old-world European charm to 661's impressively contemporary entrance.



# A CUT ABOVE

The onyx used to construct the walls in the Grand Library has been cut as fine as possible so as to allow enough light to pass through, lighting the space with a certain amber glow.



*The signature onyx and glass wall design at the Grand Library*

# BONJOUR LALIQUE

Lalique is considered the epitome of excellence in French glass and crystal creations. It is a highly-coveted signature that defines rare beauty across a wide range of design worlds, from perfume bottles and jewellery to wall art and delicate sculptures.

Each Lalique item is subject to rigorous checks and selection to maintain the highest standards of craftsmanship. When the work is satisfactorily completed, the Lalique signature is appended as a mark of quality and authenticity.

And now, 661 Chapel St is graced with the beauty of Lalique, incorporating works of art that are rare in their splendour.





# THE ART OF COLLABORATION

Lalique, to the delight of art connoisseurs around the world, has collaborated with a selection of renowned artists, including the famed British artist, Damien Hirst.

An artist of immense talent, Hirst moves beyond the typical boundaries of what defines art. His work connects intimately to the human experience and challenges contemporary beliefs in the process.

The Lalique-Hirst collaboration has resulted in a magnificent vision entitled *Eternal*. The motif is the butterfly, presented in three forms that represent love, hope and beauty. This exquisite collection has been described as achieving "fragility and beauty, both ephemeral and eternal at the same time".

# ART MADE FURNITURE

The collection at 661 is a translation of passion for innovation and surprise. Designed as much as a feast for the soul as it is a source of comfort, the furniture that adorns the premise are usable art pieces.





*Beauty is enlightened by the Ground Floor fireplace*







# LUXURIOUS LIFESTYLE

---

FACILITIES

---

# A BOUNTY OF BLISS



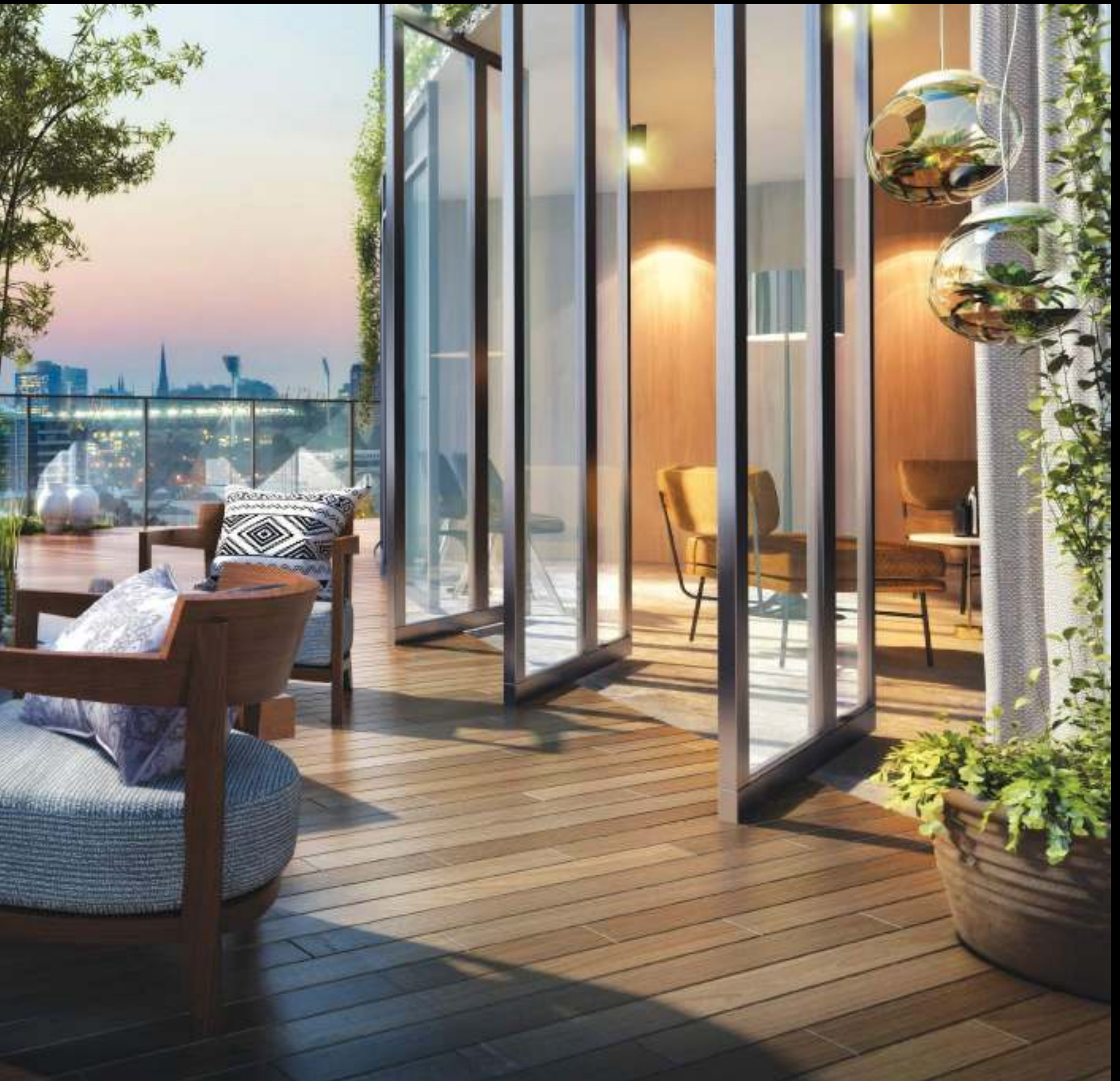
*The outdoor courtyard at Level 6*

**The Winter Garden is an oasis for a myriad of luxurious and lively pursuits, with courtyard views that are meant to impress.**

In addition to the facilities on the ground floor, there is another world of shared pleasures on the sixth. This is an escape to a haven of pure relaxation and indulgence at the spa pool, residents' lounge, full-scale gym, sauna and steam room. These facilities are nothing short of tranquility with promises of sheer comfort and pampering from head to toe.

Residents have exclusive use of signature kitchens and private dining rooms for entertaining up to 20 guests.

At 661 Chapel St, residents sincerely get the best of both worlds at this blissful level.



# FACILITIES & AMENITIES

---

## GROUND FLOOR

---

- PRIVATE *PORTE COCHERE*
- SCULPTURED WALKWAY
- MEET & GREET CONCIERGE
- GRAND LIBRARY
- MUSIC CORNER
- REST & RELAX
- LOUNGE
- BIKE SPACE
- FIREPLACE
- PRIVATE DINING ROOM

---

## LEVEL 6

---

- SHOWER
- SPA POOL
- GYMNASIUM
- SUN DECK
- 25-METRE LAP POOL
- SUMMER LOUNGE
- SPORTS LOUNGE
- MINI THEATRE
- READING NOOK
- FIREPLACE
- WINTER GARDEN
- VIEWING DECK
- BBQ PITS
- PRIVATE DINING ROOMS
- WINE CELLAR





*Add unsurpassed views of the CBD to your workout at the fully-equipped, state-of-the-art Level 6 gym.*

# SWIM TOWARDS THE

661 Chapel St offers crystal-clear waters at the 25m lap pool located on level 6 that dramatically cantilevers out over the *porte cochere*. It's a lovely, aqua oasis in the midst of the city's concrete jungle.

The design of this architectural feat was accomplished with such ingenuity and class, as can be seen by the sole concrete beam that supports it. Incorporated into the design was the ascension of the base that offers an immaculate view of the Chapel Street skyline.

This pool with its surrounding entertainment areas and sun deck at the Summer Lounge is a functional work of art.



# SKY



*The crystal-clear waters at the 25m lap pool*

# AGE GRACEFULLY



Savouring a glass of wine is a pleasure that should only get better with time. So it's important to regulate humidity levels to help wine age for longer. If humidity is too low then there is a danger that corks will dry out.

Our 2000+ bottle wine cellar allows residents to store their fine selection for a nominal sum in the event of an extended holiday when they need to ensure that the temperature is just right, all the time.

Adjacent to the cellar are the formal dining rooms that look out toward luscious green.





# FROM VINE TO FINE WINE IN 200 YEARS

Australia has a renowned reputation throughout the world for producing fine wine. And it all started two centuries ago when a few vines transported from Europe found their way to the Governor's garden in Sydney.

Many settlers who arrived in Australia in the early- to mid-1800s envisioned both the financial and quality potential of wine production. Soon thereafter, these new vineyards were exporting their treasures back to Europe, and have been winning major international awards in almost every wine competition ever since.

Today, there are over 60 wine-producing regions throughout Australia, including the Yarra Valley in Victoria.

Make no mistake. Australians take their wine quite seriously. The popularity expresses itself in a growing interest in wine appreciation, university courses in viticulture (grape growing) and wine making, a proliferation of boutique wines and, of course, the increasing number of oenophiles you can spot at so many of the sidewalk cafés of Chapel Street.

So whether you are enjoying a sublime vintage with friends at Chapel Street, or one at home from your private cellar at 661, remind yourself you're in Australia – one of the top 10 wine producing countries in the world.

*Source: Australian Government*





**HOMIE**  
IS WHERE THE HEART IS

— LIVEABILITY —



# A VIEW THAT INSPIRES

Owning a home at 661 Chapel St is to know you've arrived. You embrace that understanding every time you look out your window. Each level has a stunning view, with its own perspective. From the top, the views are expansive, a panorama that reveals the largesse of the neighbourhood and a dramatic city skyline. Lower levels are equally impressive, but more intimate, with soothing sights of the Yarra River and those who are enjoying its ambling majesty.



*Indicative view at level 30*

# A PERFECTLY TAILORED FIT

Home is even sweeter when everything in it is designed with your comfort, convenience and sense of style in mind. These include the 'little' things in life, chosen by experts in their fields, that become both a source of pride and pleasure.

The elegant and generous living area with full-height glass gives a tremendous feeling of airy freedom. Beautifully engineered timber floors give the kitchen and living areas a warm appeal during precious moments with your partner at breakfast or while simply relaxing and taking in the stunning views of the Melbourne CBD.



Spacious balconies with glass balustrades and aluminum hand rails allow you to safely appreciate the amazing view. Double-glazed sliding doors to the balconies provide peace, quiet and privacy to you and your loved ones. Luxuriously fitted bathrooms feature clean colour palettes and charming hexagonal tiles as a design feature.





Premium reconstituted stone surfaces adorn your world class kitchen that any chef would wish to own. A practical and beautiful finishing touch.

With premium European fixtures in the kitchen and hinged-door panels that have soft-closing mechanisms, plus Miele and Gaggenau designer appliances and other gourmet-friendly features, it is a joy to cook here.





# AT YOUR SERVICE

Perfection is further extended by the luxuries that are available with ownership, like the option of a 24-hour concierge service. Their mission is your total ease and satisfaction, whether you need them to call Uber for you, arrange for groceries to be delivered or just want a little personalised pampering like an in-residence hairstyling session, or a relaxing massage.









FROM CHAPEL  
WITH LOVE

---

LOCATION

---



**A RIVER  
THAT  
SHAPED  
A CITY**



## MELBOURNE – THE WORLD'S MOST LIVEABLE CITY\*

*\*Economist Intelligence Unit's (EIU)  
liveability survey of 140 cities.*

What is it about Melbourne that makes it so magical? As a world-class city, it certainly delivers an exhilarating mix of arts and culture, dining, shopping, entertainment and relaxation. It is Melbourne's unique and complex personality, developed over generations of multiculturalism and cosmopolitanism that fuels its shine.

Consider also the mindful planning of extra-wide streets that meander artfully into the back lanes filled with quaint cafés, boutiques, galleries and ateliers. Or the collective mind-set that embraces the creative, artistic, unique and intellectual; that seeks to preserve the past yet salutes the present and future.

Imagine too, breezy walks beside a flora-filled riverbank, enjoying both nature's magnificence and the life most others can only wish to have.

Of Melbourne's neighbourhoods, the prestigious South Yarra is amongst its brightest stars. In fact, it has been ranked as the top most-liveable suburb in Melbourne. Banked by the picturesque Yarra River, South Yarra epitomises the wonder of living in the world's most applauded cities.







*The Yarra River - pristine pleasures  
of a natural neighbourhood*

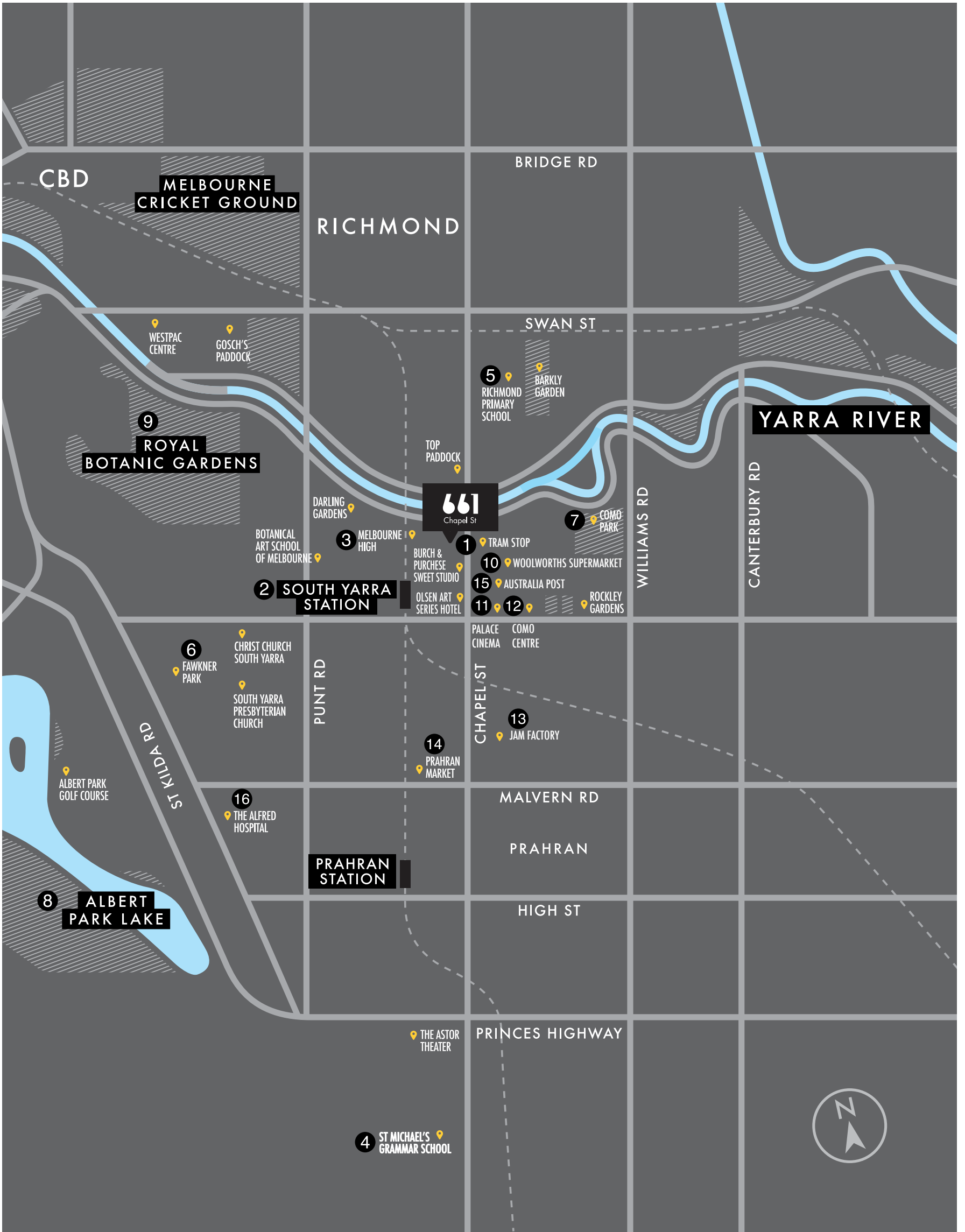
# PICTURESQUE PRESTIGE





661 Chapel St is at the centre of an eclectically fascinating neighbourhood. Despite the area's status as a magnet for celebrity drop-ins and the fashionista elite, Chapel Street holds open arms to more earthly pursuits. It is also about street cafés and sidewalk art shows, chat and people watch. That is the essence that makes Melbourne – and its shining Chapel Street star – a uniquely appealing place to live.



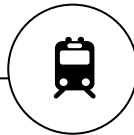


# A WALKER'S DREAM

Central to Chapel Street's master plan was the idea of encouraging walking and biking by ensuring residents' needs and creature comforts are all but a few moments away.

In fact, 661 Chapel St has earned a near-perfect "Walkability" score of 97 out of 100, which greatly adds to the value of owning a home there. Perhaps even more than that, it means that there is so much to discover, all in one place.

## TRANSPORT



- 1 Tram stop at doorstep
- 2 8 mins walk to South Yarra station  
(2 stops to CBD Flinders Street station)

## EDUCATION



- 3 Adjacent to Melbourne High School
- 4 7 mins drive to St Michael's Grammar School
- 5 12 mins walk to Richmond Primary School

## PARKS & RECREATION



- 6 4 mins drive to Fawkner Park
- 7 13 mins walk to Como Park
- 8 10 mins drive to Albert Park Lake
- 9 20 mins walk to Royal Botanic Gardens Melbourne

## LIFESTYLE



- 10 1 min walk to Woolworths Supermarket
- 11 5 mins walk to Palace Cinema
- 12 5 mins walk to Como Centre
- 13 8 mins walk to Jam Factory
- 14 16 mins walk to Prahran Market

## AMENITIES



- 15 3 mins walk to Australia Post
- 16 7 mins drive to The Alfred Hospital

ATM and Banks at doorstep

Cafés and boutiques at doorstep



**MEET** YOUR  
**NEIGHBOURS**

# SOUTH YARRA – RANKED THE MOST- LIVEABLE SUBURB IN MELBOURNE IN 2011\*

\* *The List: Melbourne suburbs liveability ranking revealed, [www.domain.com.au](http://www.domain.com.au) (Ranking date: Nov 2011)*



“A  
LITTLE  
PLACE  
I KNOW”

Three of Melbourne's colourful urbanites have revealed what they most love about life on Chapel Street. They spoke of their favourite restaurants, shops, views and places to visit and relax.



# CHLOE TING

Familiar to fashionistas is the name Chloe Ting. While she says Chapel Street's inspiring environment motivates her to get out of bed, the most important thing about the vicinity is its location.



## 1/ What does fashion mean to you?

As a fashion blogger, it's part of my everyday life! Fashion is a lifestyle to me and I enjoy sharing through my blog, tips on fashion and how to look and feel great.

## 2/ How would you describe the character of Chapel Street?

Chapel Street is one of the hottest spots in Melbourne because of its vibrant culture, its countless number of boutique stores and dining options. There's just so much to love about it so it's easy to understand why it's a second home to a lot of people, including me!

## 3/ What are some of your favourite shops in and around Chapel Street?

You can find a lot of local designer boutiques on Chapel Street and my favourites are LIFEwithBIRD, ShakuHachi, Gorman, Alice McCall, Manning Cartel and Zimmermann. If it's food you're after, you've got plenty to choose from with my top picks being Mr Miyagi for dinner, Burch & Purchase for cakes, and Chapelli's for 24 hours coffee.

## 4/ What do you love most about the Chapel Street area?

There is so much to love about what's within Chapel Street, but I think the most important thing for me is its location. It's a train stop away from the city if you need to get to work, it's a short walk to the Botanic Gardens if you're feeling like a run along the Yarra River, there are tonnes of trams to get you anywhere within the inner city, and it's easily accessible to freeways and highways when you're getting to the outer suburbs or country side.

# DARREN PURCHASE



**Darren Purchase is the owner of Burch and Purchase Sweet Studio, an exquisite bakery at 647 Chapel Street.**

**1/ Burch and Purchase is a landmark on Chapel Street. What were some of the reasons you chose Chapel Street as your shop location?**

Chapel Street is iconic in Melbourne and has long had an amazing variety of food and fashion. It was important for me to position my business in the area suited to my demographic and the part of Melbourne I spend most of my time in.

**2/ How would you describe the character of Chapel Street and in what way does it inspire you?**

Chapel Street is inspiring for its vibrancy and diversity in businesses and the visitors to the area depending on what time of day it is. It's a landmark in Melbourne and I am proud to have a business on the street. This inspires me to try and create landmark desserts for my customers.

**3/ What are some of your favourite shops in and around Chapel Street?**

Food wise, I love the new Hawker Hall at number 98 Chapel Street. My friend Ben Cooper is the chef there and his food is amazing. Morris Jones is owned by another chef mate of mine, Matthew Butcher, and it is a fantastic space with great food. My local coffee shop is En Vogue in Vogue Plaza, virtually opposite my shop and I am there every day for a great coffee, sandwich or one of their tasty salads. Aside from food I am a fan of T2, JB HI FI and Calibre.

**4/ What do you love most about the Chapel Street area?**

I love the amazing variety of quality retail, fashion, restaurants, cafés and bars. I love being part of the history of Chapel Street and witnessing its evolution.

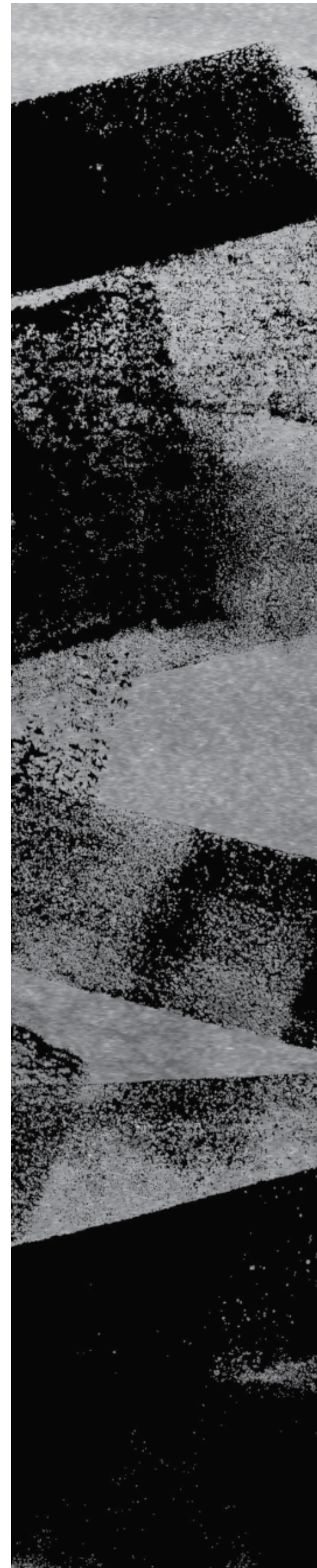




# JANE O'NEILL

Jane O'Neill is the Art Series Hotels' curator in Melbourne. The concept of the Art Series Hotel Group provides alternative environments for the art community to display their artwork.

Ms. O'Neill was asked how her work and life blend at Chapel Street.





# A DIFFERENT PERSPECTIVE

I'm often walking along Chapel Street between The Olsen and The Cullen, so if there's time between meetings I can break up the day with a visit to one of the many local businesses.

**Dinosaur Designs** on Chapel Street showcases consistently well-crafted jewellery and objects. I'm in awe of how Louise Olsen has established a recognisable brand which maintains creative integrity.

A little further up is **Station**, a well-respected contemporary art gallery in Ellis Street, showcasing an excellent range of mid-career artists from Australia and overseas.

**Eckersley's Art and Craft** on Commercial Road is also great for art materials. The staff are very friendly and always willing to assist with special requests.

And for something to eat, I love **Hutong Dumpling Bar**. It's a super place for a quick work lunch or a family get-together. I love how the back room has a view onto a bamboo garden.

# LOCAL LOVES ON CHAPEL STREET



## FOOD GLORIOUS FOOD!

If you enjoy dining under a blue, sunlit open sky, or below a celestial blanket of stars, then what you're looking for is to call Chapel Street home. Acclaimed as the alfresco place to be, dining, sipping or tasting in a number of establishments is a Chapel Street intent.

But that's just the start of it. Drop by the Windsor Delicatessen and pick up a fresh-baked meal. Choices for coffee are endless, along with an amazing array of local, Chinese or other ethnic temptations. You name it and your neighbourhood claims it, from the hunger-satisfying Mr Burger or healthy options at Two Birds One Stone to IL Forno Pizzeria or the the acclaimed Steer Bar & Grill.

**Food Near 661:**  
Windsor Delicatessen: 2.3km  
Mr Burger: 1.1km  
Two Birds One Stone: 650m  
IL Forno Pizzeria: 1.1km  
Steer Bar & Grill: 500m



## THE FASHION GO-TO FOR THE STARS

Chapel Street is a fashionista's heaven. More importantly, it is a gallery for the most sought-after and internationally recognised Australian designers like Godwin Charli or Shakuhachi. Shoes. Accessories. Jewellery. Men's and women's cutting edge fashion – shirts and bow ties from Urbana, jumpers and suspenders from Autonomy – designers and their shops that cater for the discerning few.

**Fashion Near 661:**  
Godwin Charli: 800m  
Shakuhachi: 500m  
Urbana: 1km  
Autonomy: 1.7km



## ART AND ARTISTIC ENDEAVOURS

Chapel Street embraces the creative inspiration of art. From its overall design, to the delicate additions to its spaces. Similar sculptures can be found at Bromley & Co and other limited editions at Signed & Numbered.

Chapel Street is nothing if not a creative enclave. There are galleries of local artistes (follow the Art Town walking tour). Showcases of art that you might imagine for your own home at 661 Chapel St.

You'll find functional décor in furniture and furnishings that are splashes of you, original and undeniable. Unique treasures for your wall, in a space, all at your doorstep.

**Galleries Near 661:**  
Bromley & Co: 3.0km  
Signed & Numbered: 1.6km



## ROCK AND RELAXATION

Chapel Street offers theatre (Chapel off Chapel), music (Trance @ Chasers), or merely the opportunity to meet in a superbly pleasant environment (the parks and gardens in Stonnington). You can always get rocking again at the ever-popular Jam Factory.

Chapel Street is a true original. Its unique lifestyle and design amenities, coupled with local yet world-class allure, make it a very sought-after address.

**Entertainment Near 661:**  
Chapel off Chapel: 1.3km  
Trance @ Chasers: 1km  
Jam Factory: 650m

# FABULOUS EATERIES

## TWO BIRDS ONE STONE

When it comes to the freshest baked pastries that are known among the Chapel Street community, one café stands out for its delectable home-made crumpets with rhubarb jam, mascarpone and candied macadamias. These sweet delights aren't the only thing on the menu that gets patrons salivating, as the crispy pork belly is often referred to as the main star.

## MISS CHU

Inspired by Vietnamese roots that promote fresh and healthy ingredients, Miss Chu is often known as the Queen of Rice Paper Rolls for a simple, hawker style takeaway meal to satisfy customers. Beautiful interiors complement the clean and tasty eating you'll experience in this charming food haven that breathes authenticity.

*Photo supplied by Miss Chu*



*Photo taken by Marco Laasonen Supplied by Miss Chu*





## TOP PADDOCK

Waiting for a table at Top Paddock can sometimes take up to 40 minutes on weekends, but the wait is definitely worth every second. This established café uses green beans and an in-house roaster for a signature blend to match seamlessly with their extensive menu. The Queensland soft shell mud crab & salad with lime mayonnaise is to die for.

## HAWKER HALL

Hawker Hall has a well-kept secret that more often than not ignites and tingles a heat-seeker's fiery craving. Inspired by Malaysian and Singaporean local cuisine, this popular establishment caters to customers that prefer a wholesome supper. Potent curries, and fresh hand-made noodles with stir-fried favourites can be found in this genuine and timeless hawker market.



*Photo supplied by Hawker Hall*





*Photo supplied by Godwin Charli*

*Photo supplied by Godwin Charli*



# FAVOURABLE FASHION BOUTIQUES

## **GODWIN CHARLI**

There isn't a more distinguished European retailer that has created a legacy for premium, ready-to-wear and made-to-measure tailored fashion in the Melbourne metropolis. Only the best fabrics from around the world are used by Godwin Charli to specialize in garments that both men and women consider as luxury clothing that exudes stylish quality.

## **COUNTRY ROAD**

Loved by Australians as the best local brand that produces high quality and extremely affordable women's, men's and kid's clothing, it also has a unique and practical range of homewares that Country Road is appreciated for. The spacious South Yarra store is a local favourite in the stylish precinct of Chapel Street.



*Photo supplied by Godwin Charli*

Photo taken by Heather Lighton supplied by Kit and Ace.



# STUNNING ART EXPOS



Photo supplied by Bromley & Co

## BROMLEY & CO

David Bromley truly is a one of a kind talent that produces a combination of unique art, fashion, sculptures and hardware in his collection of personal masterpieces. For the artistic few looking for unique pieces of art for home interiors, Bromley & Co leads the way of revolutionary artistry and innovation.

## SIGNED & NUMBERED

If genuine fine works of art are what you're seeking, Signed & Numbered represents the whole art spectrum of the many intriguing artists of majestic Melbourne. Each print is signed and numbered by the artist and comes to you with a certificate of authenticity and additional information about the artist that inspired the work.

*Photo taken by Francesco Vicenzi,  
supplied by City of Stonnington*



*Photo taken by Francesco Vicenzi,  
supplied by City of Stonnington*

# PARKS AND GARDENS

Whether you're naughty or nice, an eventful Christmas Carols celebration at Central Park is a favourite among the locals and is only 15 minutes' drive from 661 Chapel St.



# ELECTRIC ENTERTAINMENT

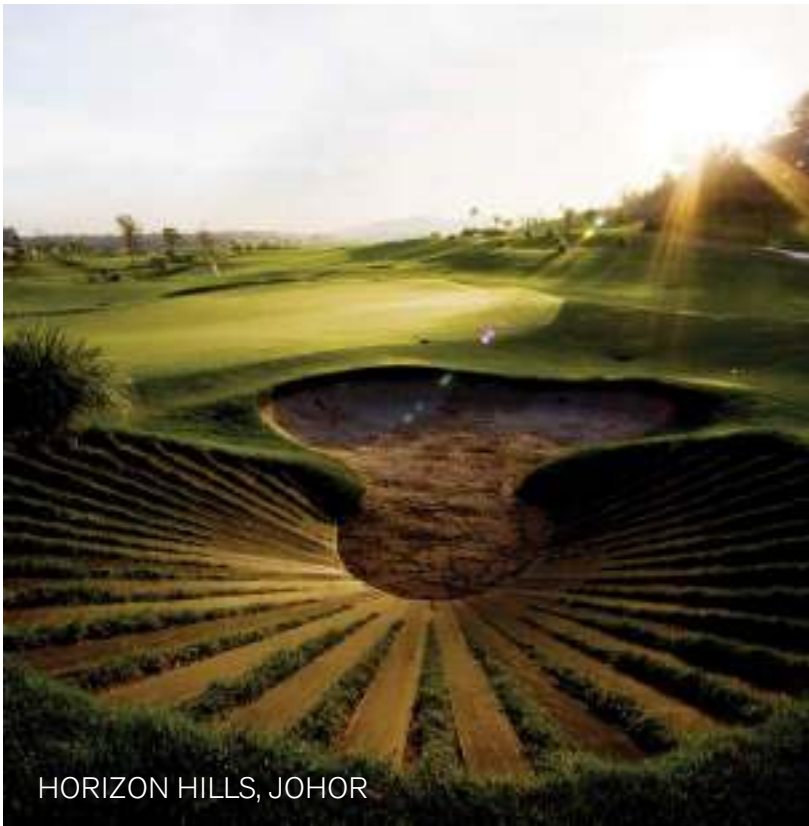
## VILLAGE CINEMAS, JAM FACTORY

There are not many cinematic experiences in the country that really create a lasting impression even after the movie has ended. Village Cinemas offers exclusive state of the art facilities and comfort to watch the latest movies from all over the world, with super-wide screens and digital audio that will blow away thrill seeking cinema-goers.

## MOOMBA FESTIVAL

One of Melbourne's most anticipated annual festivals, Moomba is Australia's largest free community festivals and one of the longest running festivals to date. The Yarra River provides a cool breezy ambience for traditional events like the Moomba parade, fireworks display, carnivals, the birdman rally, and fantastic entertainment for all ages.

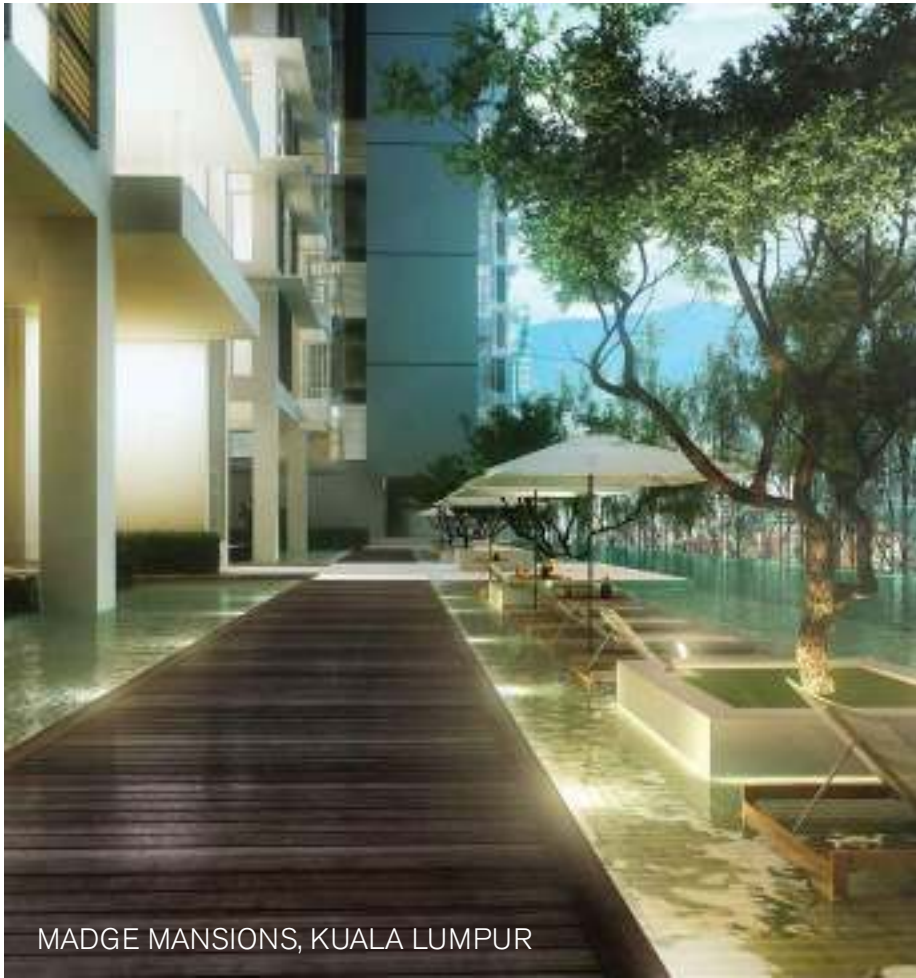




HORIZON HILLS, JOHOR



KOTA KEMUNING, SELANGOR



MADGE MANSIONS, KUALA LUMPUR



BANDAR BOTANIC, SELANGOR

# GET TO KNOW US

At Gamuda, our consistent efforts to innovate are combined with a high level of service and have been recognised by the industry year on year, winning numerous international awards.

We excel at value creation, having won the Edge-PEPS Value Creation Excellence Award for 4 years running. This coveted award recognizes developers who create the best value for buyers through product offerings that have high capital appreciation.

- **The Edge Malaysia PEPS Value Creation Excellence Award, Residential Category (Bandar Botanic) 2015**
- **Horizon Hills & Bandar Botanic (2014)**
- **Bandar Botanic & Kota Kemuning (2013)**
- **Kota Kemuning & Horizon Hills (2012)**
  
- **The Edge Malaysia Property Development Excellence Awards 2015 – Kota Kemuning**
  
- **KVMRT (Sungai Buloh-Kajang Line) – Underground, Winner for Technical Innovation of the Year Category for the Variable Density Tunnel Boring Machine (VD TBM), International Tunnelling and Underground Space Awards 2014**
  
- **5-Star SCORE Rating, SCORE Programme 2014, Construction Industry Development Board Malaysia**
  
- **Gamuda Land, The Edge Malaysia Top Property Developers Awards, The Edge Malaysia Property Excellence Awards (2012-2015)**
  
- **The Edge Billion Ringgit Club Awards**
- **Most Profitable Company – Construction (2015)**
- **Best Performing Stock – Construction (2015)**



## **Gamuda (Australia) Pty Ltd**

Menara Gamuda  
PJ Trade Centre  
Level 12, No 8 Jalan PJU 8/8A  
Bandar Damansara Perdana  
47820 Petaling Jaya  
Malaysia

T +603-7491 3370 / +603-7491 3376  
F +603-7728 9208  
E [661chapelst@gamudaland.com.my](mailto:661chapelst@gamudaland.com.my)

**T** +61 411 523 355  
**W** [661chapelst.com](http://661chapelst.com)

All information contained in this brochure, including the specification, plan, measurements and illustrations, is subject to amendment without notification and are not intended to form part of an offer or contract. Whilst every care has been taken in providing this information, the owner, developer, builder and managers are not liable for (and hereby exclude, to the maximum extent permitted by law, any liability in relation to) any omissions, inaccuracies or future variations, modifications and substitution (including as may be recommended by the developer's architects, consultants and/ or required by government authorities).

The descriptions of the specifications of building materials and fittings are merely general descriptions and may vary between units. For avoidance of doubt on the specifications, please always refer to the contract of sale. This brochure should not be construed as an offer to sell the units described herein. All statements and illustrations are subject to change without prior notice and cannot be relied upon as a complete description of the units. This brochure includes artist's impressions which provide an impression of the intended completed development only. No warranty is given that the completed development or surrounding landscape will comply to any degree with the artist's impressions. This brochure will not form part of, or otherwise override or amend, any contract of sale between the developer and the purchaser.

To the maximum extent permitted by law, none of the owner, developer, builder or managers gives any representation, warranty or guarantee, whether express or implied, of any nature whatsoever, including but not limited to, that the information supplied in this brochure is complete, accurate, current or verified; or has been compiled or prepared with reasonable care; or that it may be relied upon in assuming any contractual liability; or is or will be audited or independently verified or reviewed; or contains any representation as to opinions, forecasts or future matters upon which any assumptions may be based. To the maximum extent permitted by law, any liability for loss or damage incurred or suffered by any person who acts or makes decisions on the basis of this brochure is excluded.

